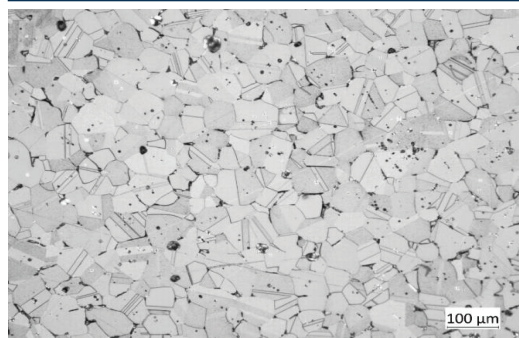
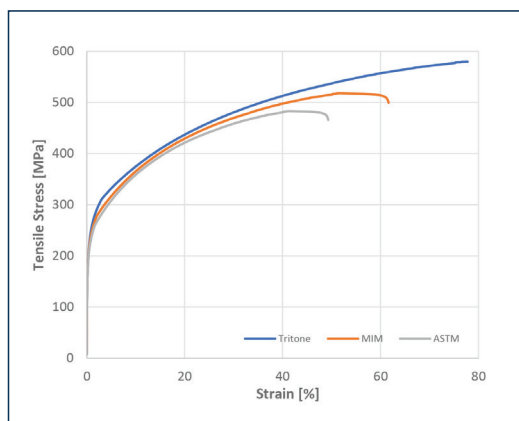


Material datasheet

316L Stainless Steel

Composition – According to ASTM A276-06

Composition	Amount
Carbon	0.03%
Silicon	1.0%
Manganese	2.0%
Phosphorous	0.045%
Sulfur	0.03%
Chromium	16.0-18.0%
Nickel	10.0-14.0%
Molybdenum	4.08%
Iron	Bal.



As Sintered

Typical Mechanical Properties

	Standard	Tritone	MIM MPIF-35 (typical)	Wrought ASTM A276
Ultimate Tensile Strength	ASTM E8	591 MPa	520 MPa	485 MPa
0.2% Yield Strength	ASTM E8	213 MPa	175 MPa	170 MPa
Elongation at Break	ASTM E8	>60%	50%	40%
Hardness	ASTM E18	67 HRB	67 HRB	-
Relative Density	ASTM B962	>99%	95%	100%



alphacam GmbH
Erlenwiesen 16
D-73614 Schorndorf
Tel.: +49 7181 9222-0
info@alphacam.de

alphacam austria GmbH Handelskai
92, Gate1 / 2. OG / Top A
A-1200 Wien
Tel.: +43 1 3619 600-0
info@alphacam.at

alphacam swiss GmbH
Zürcherstrasse 14
CH-8400 Winterthur
Tel.: +41 52 26207-50
info@alphacam.ch



alphacam.de

.at

.ch