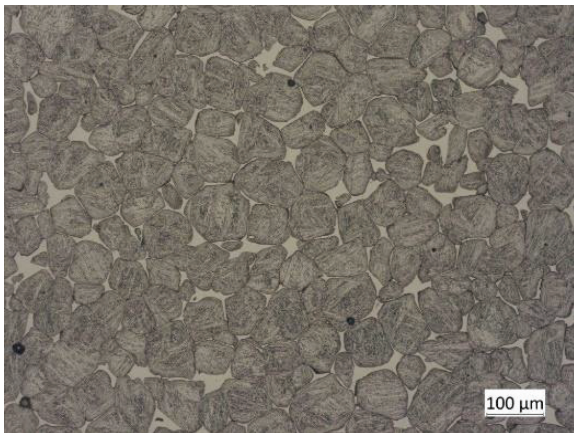
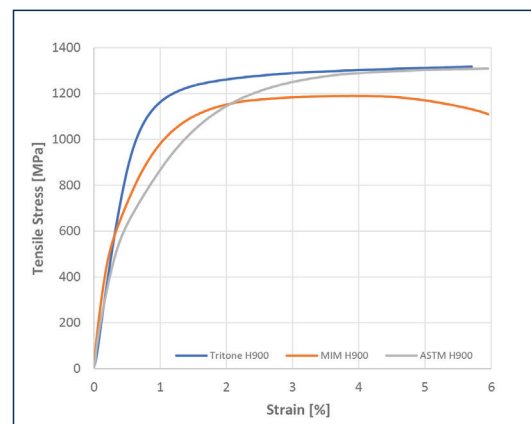


Material datasheet

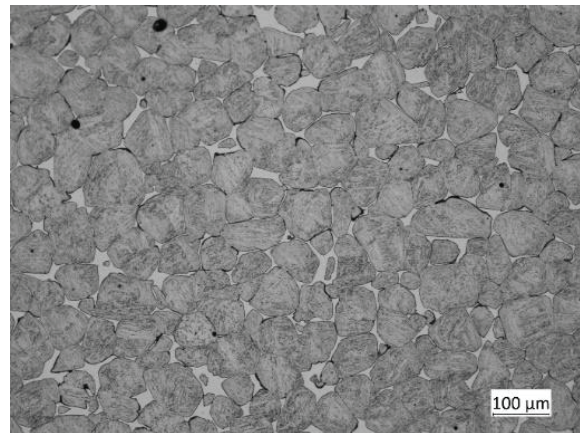
17-4PH Stainless Steel

Composition – According to ASTM A564-04

Composition	Amount
Carbon	0.07% max
Silicon	1.0% max
Manganese	1.0% max
Phosphorous	0.04% max
Sulfur	0.03% max
Chromium	15.0-17.5%
Nickel	3.0-5.0%
Copper	3.0-5.0%
Niobium + Tantalum	0.15-0.45%
Iron	Bal.



As Sintered



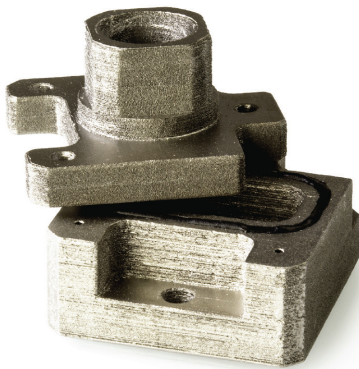
H900

Typical Mechanical Properties - As Sintered

	Standard	Tritone	MIM MPIF-35 (typical)
Ultimate Tensile Strength	ASTM E8	1253 MPa	900 MPa
0.2% Yield Strength	ASTM E8	661 MPa	730 MPa
Elongation at Break	ASTM E8	8%	6%
Hardness	ASTM E18	38.07 HRC	27 HRC
Relative Density	ASTM B962	99.5%	97%

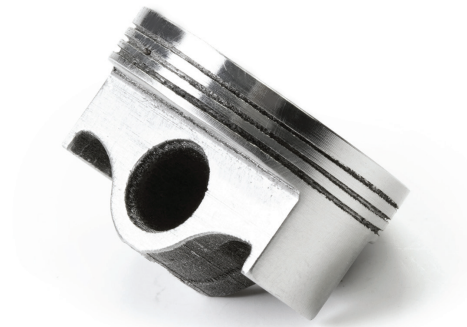
Typical Mechanical Properties - H900

	Standard	Tritone H900	MIM MPIF-35 (typical)	Wrought ASTM A564
Ultimate Tensile Strength	ASTM E8	1317 MPa	1190 MPa	1310 MPa
0.2% Yield Strength	ASTM E8	1033 MPa	1090 MPa	1170 MPa
Elongation at Break	ASTM E8	5.4%	6%	10%
Hardness	ASTM E18	41.9 HRC	37 HRC	40 HRC
Relative Density	ASTM B962	99.5%	97%	100%



Stainless Steel

17-4PH
40x40x20



Stainless Steel

17-4PH
30x30x30



alphacam GmbH
Erlenwiesen 16
D-73614 Schorndorf
Tel.: +49 7181 9222-0
info@alphacam.de

alphacam austria GmbH Handelskai
92, Gate1 / 2. OG / Top A
A-1200 Wien
Tel.: +43 1 3619 600-0
info@alphacam.at

alphacam swiss GmbH
Zürcherstrasse 14
CH-8400 Winterthur
Tel.: +41 52 26207-50
info@alphacam.ch

